

# Copycat: Data Review in the Office of Policy Support

Jinee Burdg

Social Science Policy Analyst

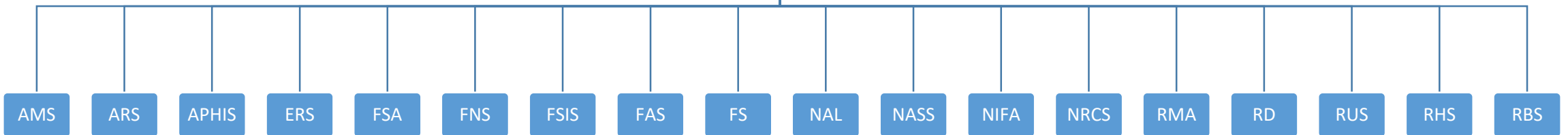


"We do things a little differently around here."

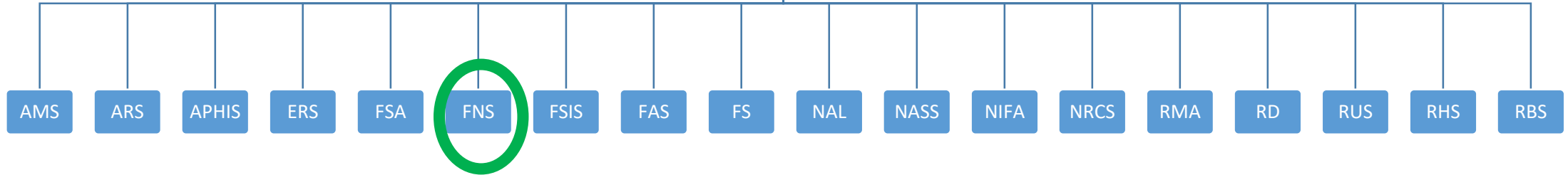
# What is OPS?

<https://andertoons.com/office/cartoon/5529/we-do-things-little-differently-around-here>

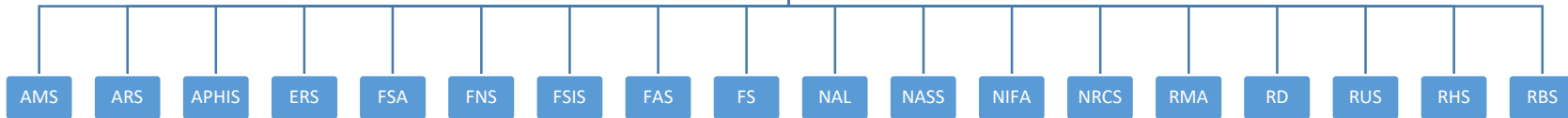
# US Department of Agriculture (USDA)



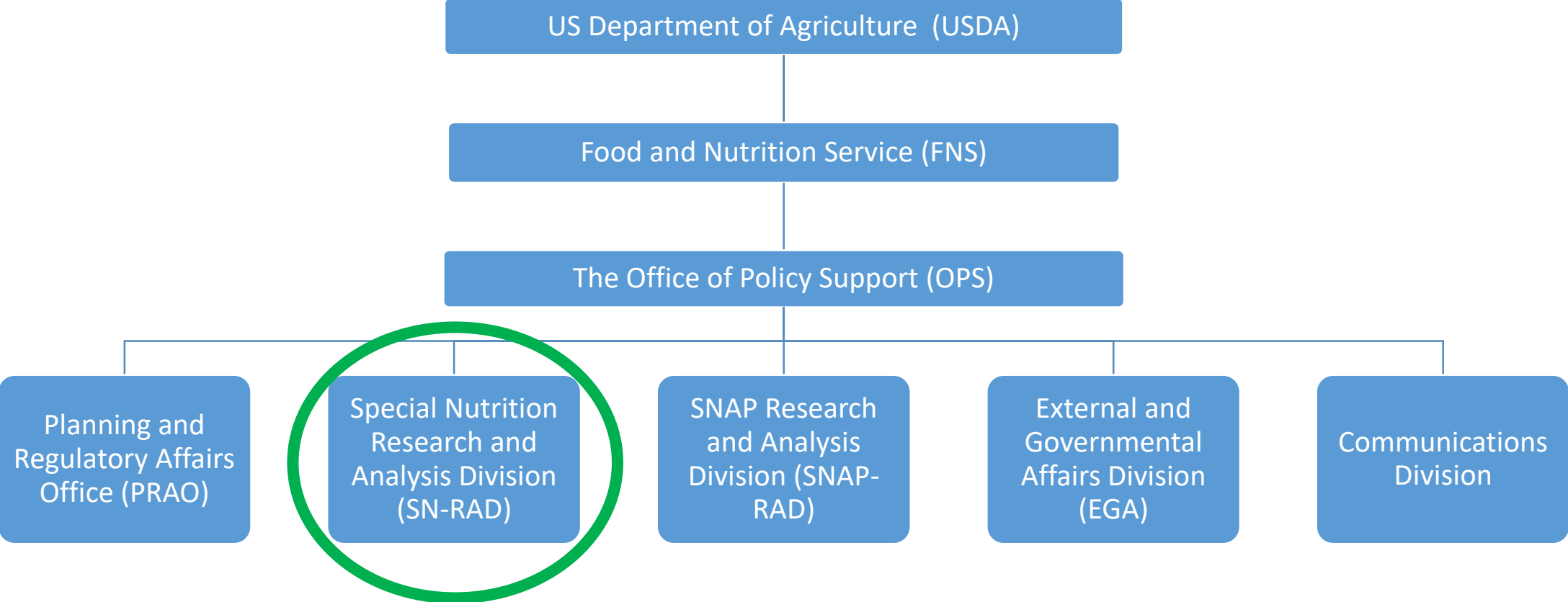
# US Department of Agriculture (USDA)

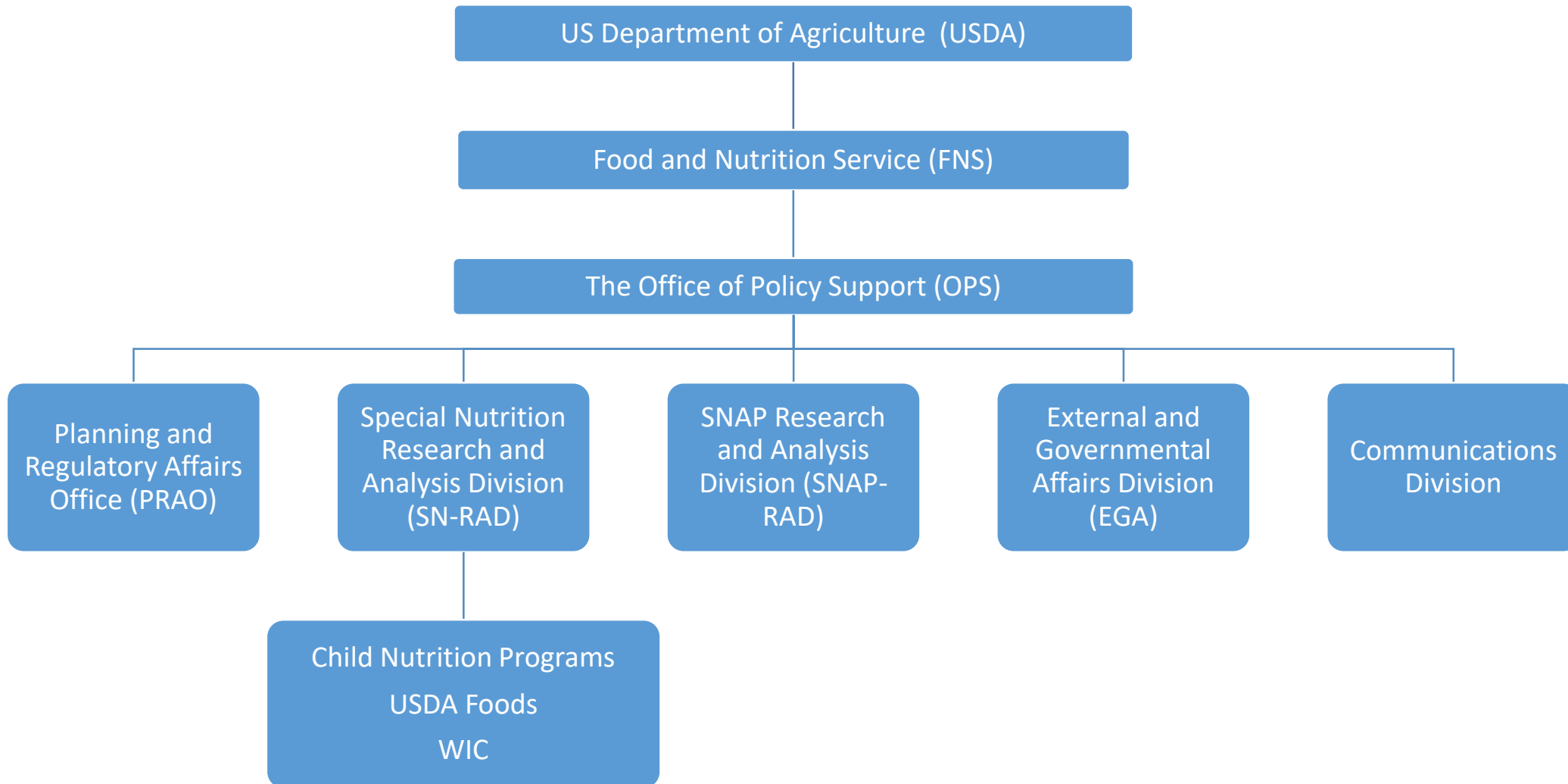


# US Department of Agriculture (USDA)



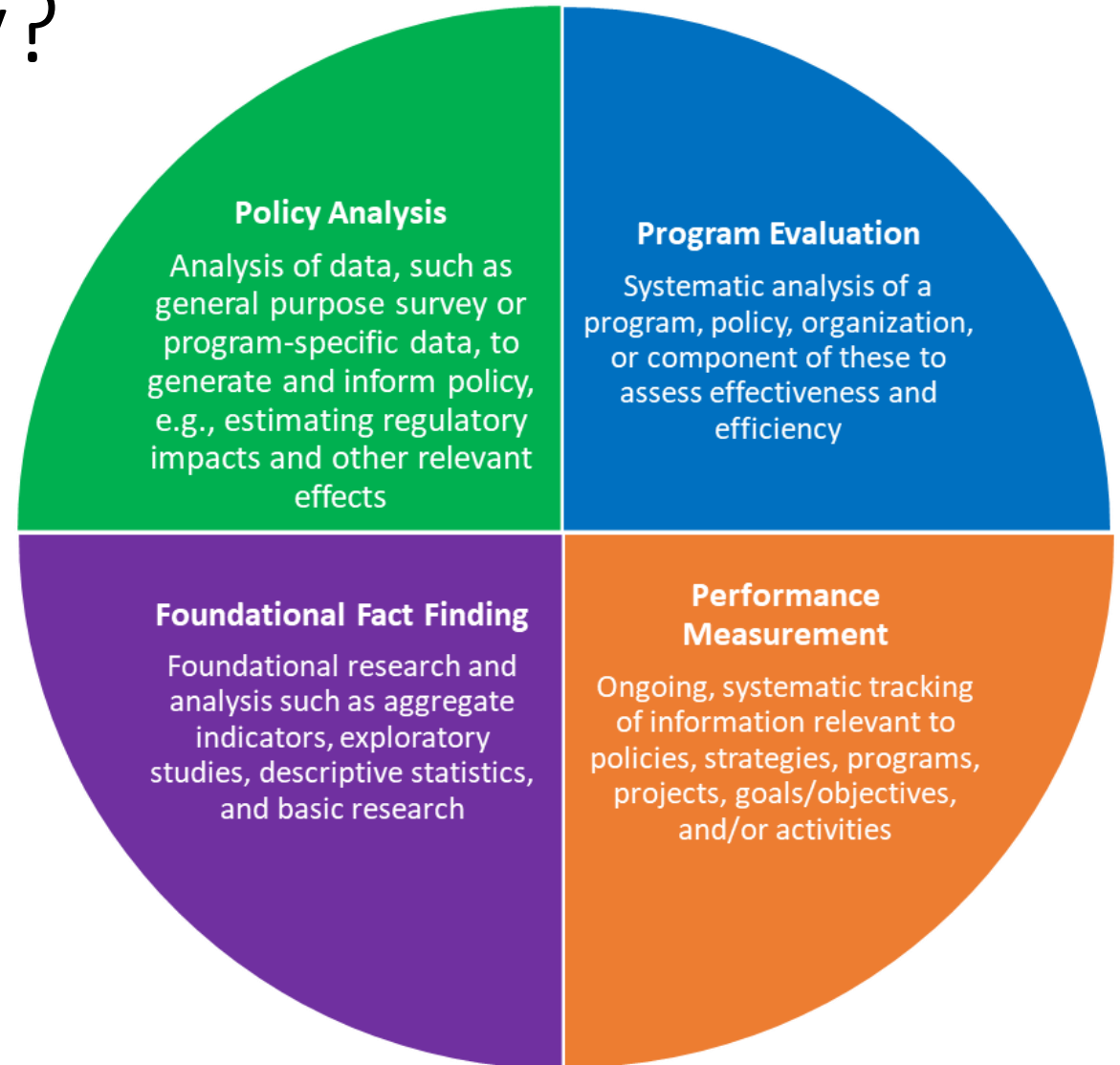
SNAP  
WIC  
TEFAP, CSFP, FDPIR, USDA Foods  
Child Nutrition (NSLP, SBP, SMP, SFSP, SSO, CACFP, FFVP)  
Nutrition Policy and Promotion (CNPP)





# Why does our office feel it is important to focus on reproducibility?

- Customer service
- Transparency
- Extending our research
- Evidence Act





# Research & Evaluation Plan

- Annual plan developed with FNS researchers
- Considerations
  - Congressional mandates
  - Strategic Goals and Agency Priority Plan objectives
  - Budget
  - Recurring studies
  - Unanswered policy questions
- Check out our plans on the FNS website:  
<https://www.fns.usda.gov/ops/study-evaluation-plans>



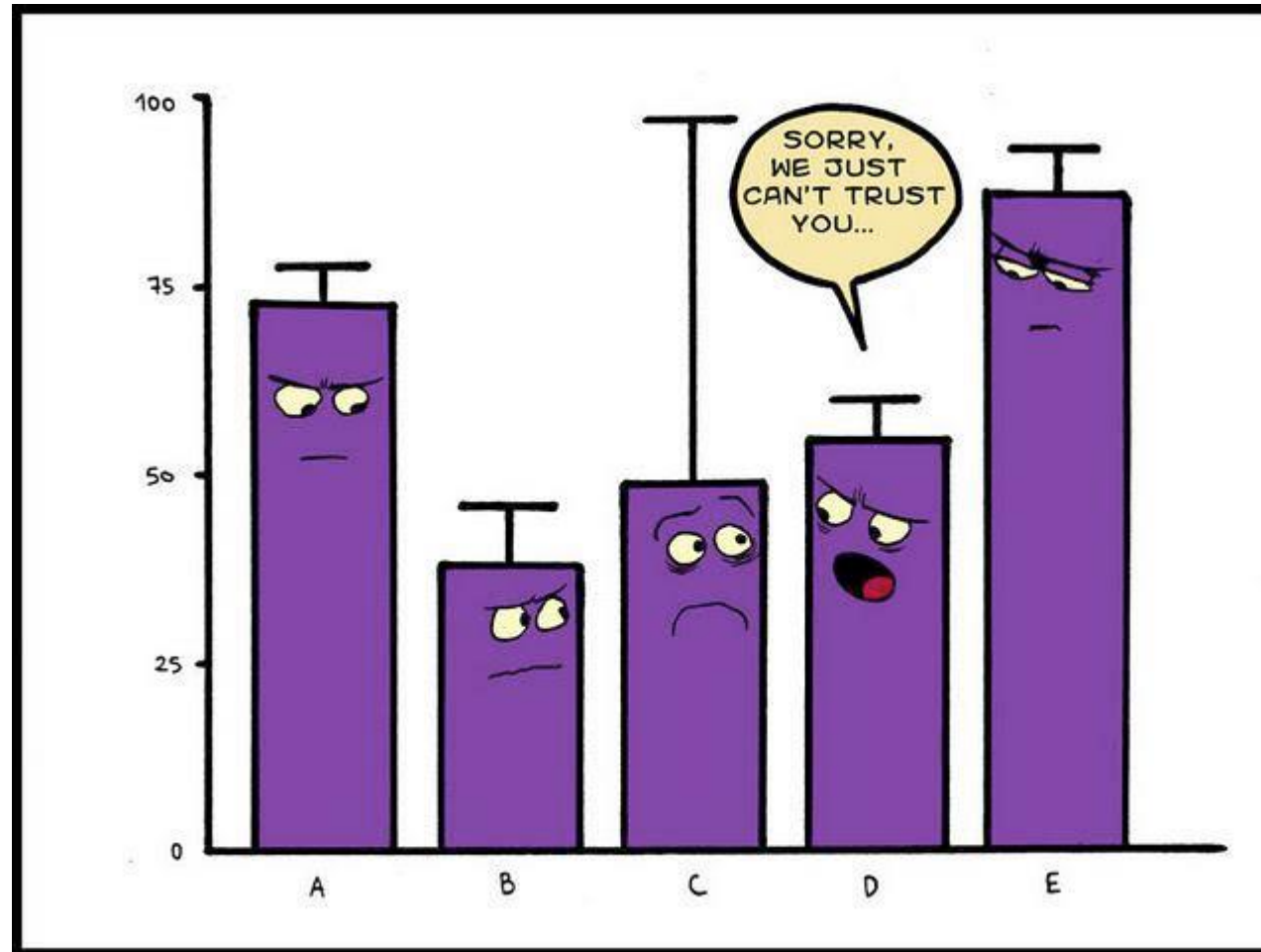
# OPS Research - Contracts

- COR/Project lead, not principle investigator
- Language about government ownership of data & analyses

# OPS Research - Types of Studies/Projects

- Evaluations
- Longitudinal studies
- Case studies
- Analysis and modeling
- Reviews

# What is our data review process?



# Contract Requirements & Deliverables

- Code/programs
- Data tables
- Codebooks, crosswalks, other documentation
- SAS, Stata, NVivo, Microsoft Access, Microsoft Excel

# Types of Data & Code

- Restricted
- Public use
- Considerations
  - PII
  - State and local sensitivity

# Data Review

- Confirm receipt of all documentation and input files needed
- Run all programs from beginning to end
- Confirm all output files and tables produced match documentation and tables provided in deliverable package
- Determining/finalizing restricted vs. public data set parameters



# Data Review - Challenges

- Missing files
- Changes in variable names
- Changes in file names
- Macros
- Lengthy code before any output
- Messy output tables
- Switching back and forth between software platforms



# Data Use

- Study publications
- Program fact sheets
- Technical assistance
- Cross tabs with other data sets
- Answer additional future research questions

# Data Use - Challenges

- PII + public use data sets
- Changes in admin data

**RESEARCH?**



**YOU MEAN LIKE  
GOOGLE?**